

# Mount Bethel Reflections

*A Publication of the Mount Bethel Cemetery Company - A Non-Profit Cemetery*

## A Message from the President

We are all living in an unprecedented period of history. Some of us are experiencing some degree of fear, anxiety, and stress. During such times, compassion – to yourself and to others- is essential. At Mount Bethel our spring programs have been rescheduled until 2021. Hopefully, the fall scheduled events, will be successfully executed.

The task of care, restoration, and maintenance is the first and foremost priority of Mount Bethel Cemetery. We are doing our best to keep the cemetery grounds maintained and safe.

Our volunteers donate their time for restoration care. The lawn maintenance is far too great of a task for our small team. The labor-intensive upkeep of mowing the lawn is completed with the assistance of a dedicated crew at an affordable price but is our largest expense.

At this time donations are greatly needed. Most funds are from the generosity of community businesses, organizations, and patrons. Donated funds are used primarily for preservation and maintenance. Mount Bethel Cemetery will continue to honor our historical, beautiful, peaceful grounds. Please consider a tax-deductible gift.

Yours Truly,

Jane Moore, President of Mount Bethel Cemetery Co.

## Traffic and Trees

There is a new traffic pattern on Bethel Street. Currently Bethel Street is one way beginning at Locust Street to Ridge Avenue. Ridge Avenue to Cherry Street remains two-way traffic.

Four trees were planted on Locust Street to replace trees removed due to disease. THANK YOU, Columbia Borough.



## Wreaths Across America

A crowd of people withstood the rainy weather December 14, 2019, to pay homage to those who served the country from Columbia, PA.

John Hinkle Jr. welcomed volunteers and the Catholic War Vet Color Guard presented the American flag and flags for each branch of service.

Ceremonial decorated wreath presenters were: Sergeant 1st Class Karen Zercher (Army), 1st Class Petty Officer Owen Brunner (Navy), Corporal Jeffrey Detz (Marine), Staff Sergeant Nicholas McCarty (Air Force), 3rd Class Petty Officer, Thomas J. McCarty (Coast Guard), and 2nd Engineer George Biagio (Merchant Marine) presented decorated wreaths for their branch of service. Master Sergeant Albert C. Storm Jr. (Army) presented a decorated wreath for POW/MIA veterans.

A resolution was made to honor Chief Warrant Officer 4 Edmund J. Wickenheiser Jr.

The ceremony ended by a gun volley by Vet 21 and taps being played by Frost Umble.

As rain continued to fall, families stayed to lay wreaths at the veterans' graves. Over 600 veterans are laid to rest at Mount Bethel Cemetery and every single one of them received a wreath. People throughout the community made monetary contributions to make sure every veteran grave was decorated.

Visit [WreathsAcrossAmerica.org](http://WreathsAcrossAmerica.org) website to **sponsor a veteran wreath for Mount Bethel's Veterans 2020**, Our location code is **PAMBCC**. Friends of Mount Bethel Cemetery was able to generate an additional \$3000 for the cemetery's preservation and maintenance. Their sponsor code is **PA0358P**

*Thank you sponsors and volunteers.*





## Perseverance Pays Off

By Kathy Hohenadel

When local website development company Sparrow Websites

announced their first Ugly Christmas Website Makeover contest in December 2018, Mount Bethel board members jumped at the opportunity. Although entries were made on behalf of the cemetery, the efforts made in 2018 did not have the desired results. But, perseverance has its rewards.

The announcement of Ugly Christmas Website Makeover 2 in December 2019 brought an increase in the efforts of Mount Bethel board members. Some even posted images of themselves wearing ugly Christmas sweaters to gain additional entries in the contest. On December 23, 2019, Sparrow Websites notified the board that the Mount Bethel Cemetery website had won the makeover.

Members from the Mount Bethel Board have been meeting periodically with representatives of Sparrow Websites at the company's offices located at 366 Locust Street, Columbia. Plans are underway for a more dynamic website. The new website's eye-catching look will serve as a backdrop to information on the cemetery's past, present, and future. Web visitors may learn about Mount Bethel Cemetery's history, may read about current events and activities planned, and may contribute to help sustain the cemetery into the future. Discussions are also underway regarding ways to accommodate web visitors who are in the midst of genealogy searches.

The COVID-19 restrictions have temporarily delayed further meetings on the web design. Watch for the revised website to become live later this year.

## Intern from Millersville University

By Claire Storm

Mount Bethel is extremely pleased to welcome Haley Schott, a student at Millersville University who is serving as an intern for historical research. Haley is an English and Journalism major who has served as an Office Research Assistant with the Millersville Alumni Association, was a Project Coordinator for the AFH

Foundation, and served as an Integrated Studies Coach at Millersville.

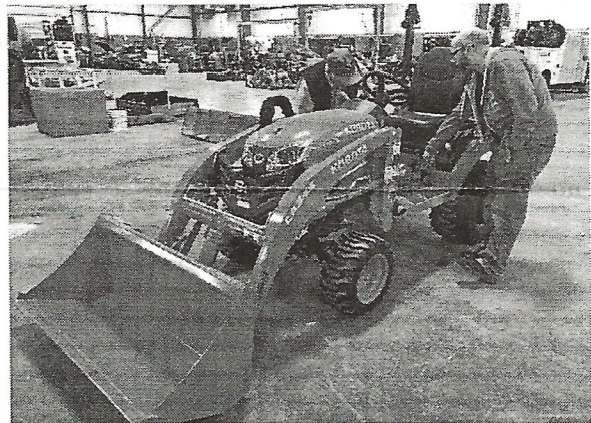
We are looking forward to having Haley unlock some of the mysteries of persons interred in the cemetery. Her goal is producing a booklet with the information her research reveals. Welcome Haley!

## New Front-End Loader

By Dave Rupp

In December, a new tool was put into service at the cemetery. We took delivery of a new Kubota SX2380 front end loader. See photo showing Messick's salesman Shannon Horst showing Superintendent Ron Mable the features of the new machine. This loader is the smallest version of the loader that Kubota offers, but it is just the perfect size for use in the cemetery. The machine will be used for filling the many depressions in the ground due to dirt settling over graves. It will also be helpful when the volunteer crew works to reset memorial stones during the summer months.

The machine was purchased with funds recently donated by the late Marjorie Heim. The Cemetery Board is very thankful for supporters who remember the cemetery when making out their wills.





# Burial Spots for Sale

By Ron Mable

Mt Bethel is not full as many believe. We have approximately 89 in ground lots for sale and approximately 100 spots in the Schlossman Memorial Garden for cremations are available. The inground lots sell for \$300.00 per lot and the Memorial Garden spots are \$1300.00 which includes the opening, memorial monument, name of person interred and date of birth. Please consider Mt. Bethel for your final resting place.

Contact: Ronald Mable (717) 285-2332  
Kevin Kraft Sr. (717) 684-2370.

## Upcoming Events 2020

### Fête en Noir

Due to its enormous success, "**Fête en Noir**" will be again held on Friday, **September 11<sup>th</sup>** on the cemetery grounds from 6:00 – 9:00PM with gates opening at 5:30PM. Music for listening or dancing is included in the ticket price of \$15pp. Reservations must be made for individual and group seating. Bring your picnic basket and beverages and enjoy an evening with your friends. Dress in black if possible. Call Jane at (717) 575-9760 or contact Claire at <astorm4952comcast.net> for tickets. Rain-date is Saturday, September 12<sup>th</sup>.

### "Dia de Muertos" (Day of the Dead Celebration)

On Sunday, **November 1<sup>st</sup>** we will remember those who have gone before us at "**Dia de Muertos**" (**Day of the Dead Celebration**) from 3:00 – 5:00PM at Perfect Settings, Second & Locust Streets, Columbia, with ethnic food, music, an ofrenda and luminaries in honor of your loved ones. This is a ticketed event and fundraiser. For more information visit [www.mtbethelcemetery.com](http://www.mtbethelcemetery.com)

### Wreaths Across America

Join us on **December 19, 2020** for National Wreaths Across America Day. Wreath-laying ceremony begins at noon. You can sponsor a wreath (\$15) for one of the 600+ veterans at Mount Bethel. Volunteers are needed to lay wreaths, no cost to participate.

Location coordinator is Jane Moore  
717-575-9760 or [jmoore1115@gmail.com](mailto:jmoore1115@gmail.com)

Visit [www.wreathscrossamerica.org](http://www.wreathscrossamerica.org) to sponsor a wreath. Our location code is **PMABCC** and sponsor code is **PA0358**.

## Rescheduled for April 2021

### A Spice of Life

An art exhibit, "**A Spice of Life**," by artist and educator Joanna Spicer. **April 23<sup>rd</sup> and 25<sup>th</sup>**, this **FREE** event will be held in the cottage at the cemetery and open to the public. Light refreshments will be served.

Joanna graduated from Moore College of Art and Design, Philadelphia with a BFA, emphasis in Textile Design. She currently teaches Art at Our Lady of the Angels Catholic School in Columbia, Kindergarten through 8<sup>th</sup> grade. In addition to teaching, she instructs Paint Events as fundraisers for non-profit organizations, student scholarships, student Mission trips, and local businesses. Her teaching philosophy is to, "Provide knowledge and encouragement at each individual's level in a fun and positive way."

Joanna has completed 2 mural projects in Columbia, one located at Locust Street Park, and the other at the Coffee and Cream Café.

## Rescheduled for May 2021

### The Last Ride and Macabre Creations

A professional car show featuring hearses, flower cars, limousines and other service vehicles will be on display. Vendors of "macabre creations" will be available for shoppers. This event is also **FREE** on the cemetery grounds on Saturday, **May 15<sup>th</sup>** from 11AM – 3PM. Rain-date for this event is Sunday, May 16<sup>th</sup>. Refreshments and raffles will be available for purchase.

For more information visit [www.mtbethelcemetery.com](http://www.mtbethelcemetery.com) or call (717) 575-9760.

The poster announcing the above events was sponsored by the following sponsors. THANK YOU!

### Gold Sponsors

Chickies Rock Moose Lodge and Family Center #307  
Columbia Fraternal Association  
American Legion Post #307 Paul Revere Leber Memorial

### Silver Sponsors

Kleen-Rite Corporation  
Columbia Lions Club  
Sunsappers

### In Kind

Art Printing  
Sparrow Websites

Events are coordinated by Friends of Mount Bethel a 501 (c) 3



## Brickyard

In 1730, the first burial was performed on a plot of land, within the Borough of Columbia, donated by Susanna Wright. This area became known as the "brickyard" and marked the beginning of Mount Bethel. It is also the final resting place of Susanna Wright, a Conestoga Indian and our founding fathers. The first burial was for John Deval, who "died" at the age of 17, in 1730.

Time has taken its toll on most of these well-weathered graves of our founding fathers. The brick path starts at the asphalt path and continues to Cherry Street near the Old Cemetery gate. "Bricks for the Brickyard" campaign began in 2015.

Approximately 50 feet of the 150-foot brick path has been started with insertions of memorial bricks purchased. For a cost of \$50 each, a brick can be personalized with the names of parents, children, friends etc. or customized with a special quote/emblem as space permits. Your message will be centered on up to three lines of text, with a limit of twenty characters (including spaces and symbols and punctuation) per line. Checks can be made payable to Mount Bethel Cemetery Co., P.O. Box 231, Columbia, PA 17512. For more information call Charlene, 717-684-6196 or visit our website: [www.mtbethelcemetery.com](http://www.mtbethelcemetery.com)

## Lockard Mausoleum

Wind, water, temperature, and gravity all effect the conditions of the monuments at Mount Bethel. The Lockard mausoleum, one of the two prominent vaults, within the cemetery, needed extensive repair. A support column needed to be stabilized and large gaps of mortar replaced. Our small restoration crew did not have the equipment to complete this job. The Mosko Cemetery Monument Services Company was able to complete the needed repairs. With the help of Ray McCarty and the Lockard Foundation financing was possible for the extensive repairs. THANK YOU for keeping this iconic memorial in great condition.

## Columbia Water Company

Incorporated in 1823, Columbia Water Company has been providing public water service for over 190 years. In 1824 the first reservoir was constructed, and Columbia Water Company began installing water mains made of logs. By 1829, Columbia Water Company began using cast iron pipes to distribute water, discontinuing the use of wooded water mains. A second reservoir was

constructed in 1860 and a 3rd in 1871. The first filtration plant was built in 1905, which was one of only three in Pennsylvania at the time. Since its early years, Columbia Water Company has progressed from wooden pipes and ground reservoirs to modern filtration equipment. Expansion, upgrades of elevated steel storage tanks and state of the art electronic control systems were completed in 2015.

### SPREAD THE NEWS

Do you know someone who is not currently receiving our newsletter? Feel free to share this document with them. Or email at: [MountBethelCemetery@gmail.com](mailto:MountBethelCemetery@gmail.com), or visit our website [mtbethelcemetery.com](http://mtbethelcemetery.com).

## ~Looking for a unique gift? ~

Do you have friends who do not need a thing? Consider donating, to Mount Bethel Cemetery. Your friend will be notified, and your gift will go to a very worthy cause. Thanks for your consideration.

### MOUNT BETHEL CEMETERY COMPANY BOARD OF DIRECTORS

Jane Moore	President
Kevin M. Kraft, Sr.	Treasurer
Claire Storm	Secretary
Ronald N. Mable	Superintendent
John F. Hinkle, Jr.	Board Member
Kathy Hohenadel	Board Member
Kathleen Lutz	Board Member
David T. Mountz, Esq.	Board Member
David M. Rupp	Board Member

### MISSION STATEMENT

*The mission of Mount Bethel Cemetery is to maintain, preserve, and enhance, for the benefit of the general public, the cottage, grounds, and memorials located within the boundaries of these hallowed grounds; to foster the appreciation and respect for those who are interred within, to maintain permanent records of those whose earthly remains have been entrusted to us; and to provide a community resource for historic, educational, and cultural activities.*

*Equal Opportunity Employer and Provider*